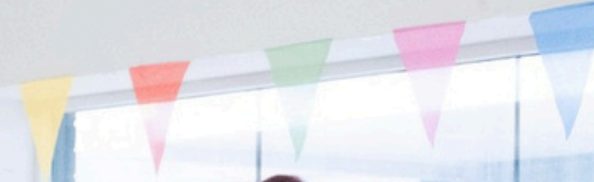




FRONTLINE
dance 
The Explorers!

contents

- About
- Synopsis
- FRONTLINEdance
- Marketing
- Tech
- Access
- Contact
- Credits



about

The Explorers! is a multi-sensory, wondrous adventure, where the audience get to help bring to life two stories, with dance, colour, sound, and teamwork. The show is a fully inclusive interactive performance and is relaxed, engaging, accessible and fun.

Audience:

The show was created for those with specific access needs, and we made the work with disabled children, hospice/hospital patients and their families, so it's fully accessible for all to enjoy and suitable for children aged 3+

Venues:

Suitable for performances at festivals, theatres, museums, libraries, special schools, children's centres, empty shops, shopping centres, hospital children's wards/departments and community centres. The audience is part of the show, so the space needs to accommodate both. However, The Explorers! Can also pop up and roam as just performers / mini dance activities as well as doing the full shows. As it's an interactive show there is a maximum of 30 active young/specific needs audience members plus their parents and carers.

Duration: 40 mins



synopsis

The Explorers go on a wondrous adventure and the audience is asked to come along too. They find two books which they read and explore, using sensory props and dance which help bring the stories to life!

Within an inclusive and open space, this interactive show encourages the audience to move and explore in the performance space, use their imagination, interact with the performers, work as a team and be creative!

Part One



Two Explorers are lost, and Dave the Explorer is looking for them. The dancers love music and dancing, and when they are reunited dance together. The show's themes are friendship and playfulness.

Part Two



The Explorers introduce themselves to the audience and ask them to join them on an adventure. They help the audience warm up their bodies ready to move and guide them around the space to see what we can discover.

Part Three



This section of the show is about exploring a book. The Explorers read a story, exploring with the audience how they can bring to life the painting and music in the book by using real paintbrushes and shakers.

Part Four



The Explorers then find a book that explores feelings and colours, discovering how this makes us move and dance. We use a giant piece of lycra and scented coloured scarves to do this, encouraging the audience to explore their senses further with the scarves and work together as a team with the stretchy lycra.

Part Five



It's time to say goodbye. The Explorers dance together for one last time, and then disappear off on another adventure!



[watch the trailer](#)



[see the easy read document](#)

FRONTLINE dance

PERFORMANCE. HEALTH. COMMUNITY.

FRONTLINEdance is an artist-led company based in Stoke-on-Trent, placing disabled people and those with long-term health conditions at the core of our organisation as leaders, dancers, artists, and audiences. We do this with heart, skill, and inclusive practice, producing participatory and performance programmes in the community and in healthcare settings.

As makers we explore how we can create exciting, relevant, and thought-provoking contemporary dance with d/DEAF, visually impaired, disabled, neurodivergent audiences and hospital patients. We co-create across ages, backgrounds, and experiences, naturally integrating people together, reducing isolation, and improving physical, mental, and social health and well-being.

We are a not-for-profit organisation, established since 2001 and an Arts Council England National Portfolio Organisation 2023 - 2026, with funding thanks to taxpayers plays a huge part in supporting our work.



marketing



Promotional Copy:

Join the FRONTLINEdance Explorers Team on their multi-sensory, wondrous adventure, where you get to help bring to life two stories, with dance, colour, sound and teamwork! This fully inclusive contemporary dance performance and participatory show is relaxed, accessible and fun!

Audience Feedback:

Everything was fantastic. Well Done Explorers! Please do more events like this.

A beautiful sensitive experience. Wonderfully in tune with all the children!

We thought it was really good! Loved everything, and my son really enjoyed being an Explorer.

Josh has ADHD & nothing keeps his attention for so long so thank you for being so awesome.

It was spot on!

All our shows need to be accessible for everyone, and we embed specific access needs into the show. This means the fee will include and we will provide:

- BSL Interpreter
- Audio Description
- Relaxed Performance
- A Touch Tour and Meet the Performers in advance (for those who need to)
- Easy Read Visual Story

Our performers sign Makaton, all performances are 'relaxed events', chillout spaces for those who need to come and go and regulate will be required, and the space needs to be wheelchair accessible.

This all needs to be made very clear when publicising the show and please use access icons and visual descriptions and alt text for the visually impaired on social media. FRONTINEdance can help you with this.

The Explorers Access Icons:

Please use these icons during show promotion:



A wider range of quotes can be found in the Explorers Dropbox MarketingFolder

[The Explorers! marketing folder](#)

which also includes photos and visual descriptions as well as the Easy Read Visual Story of the show.

Please tag @frontlinedance1 and @acegrams with logos (see below) on all marketing as well as the recommended hashtags listed below. Please also acknowledge any other funders which may change as we get funding.



Supported using public funding by
ARTS COUNCIL ENGLAND



Funded by
UK Government

Recommended hashtags:

#letscreate #npo #artscouncil #nationallotteryplayers
#DiversityIncludesDisability #inclusivedance #inclusion
#inclusionmatters #disabilitydance #sotculture #sot
#contemporarydance #danceforhealth
#disabilityadvocacy #accessibility #accessmatters
#disabled #disableddance



tech information

Duration:

40 minutes

Get in/Get out:

Minimum 2 hours get in – for warm up & run through / familiarising of work in the space. Get out 1 hour.

Time between shows:

2 shows per day, 2 hours minimum between shows, please.

Performance Space:

minimum 6 x 6 / open space with flexible seating arrangement ideally in a semi circle so that the audience can come into the performance space. A range of seating options so that audience can sit down or lie down, with wheelchair spaces and reserved seating for visually impaired people.

Set & Props:

There is no fixed set. We have soft jigsaw puzzle mats which can be used as a seating area. The show uses resources that the audience use which are handed back to the performers with the exception of the paintbrushes which they keep. This includes shakers, scented scarves, and lycra – all props are used to interact with the audience.

Warming Up Space:

venue should provide a space for the dancers to warm up, and time in the performance space prior to the show.

Lighting / Sound:

No lighting is required. If in a theatre venue then a prior discussion is required. FRONTLINEdance mainly tours with its own portable speaker, operated by the FRONTLINEdance Team. For shows where this is provided, we have a cue sheet.

Touring Party:

5-7: 4 x Explorers, 1-2 access and movement facilitators, 1 technical / sound.

Dressing Rooms:

1 lockable space to get changed and to store personal items during the show please.

Transport:

parking for 2 cars please.



access

Access for FRONTLINEdance:

- Learning disabled & neurodivergent artists
- 1 performer has deafness in one ear – speak to Dave directly so he can see you, and check for comprehension.
- Support worker will be present
- 1 artist has sensitivity to lights

Access for audiences:

All our shows need to be accessible for everyone, and we embed specific access needs into the show. This means the fee will include and we will provide:

- BSL Interpreter
- Audio Description
- Relaxed Performance
- A Touch Tour and Meet the Performer's in advance (for those who need to)
- Easy Read Visual Story

contact

For further information and for bookings please contact:
hello@frontlinedance.co.uk or call **07484 874335**



[@frontlinedance1](https://www.instagram.com/frontlinedance1)

credits

Concept and Direction:

Rachael Lines

Performers:

Katie Albon, Charlotte Arnold & David Jowett

Makaton Performer:

Lauren Turner

Music:

Greg Hall, Dean Smith & Helena Raby

Trailers:

Junction 15 Productions

Photography in order of appearance:

Natalie Willatt: Photos 2, 3, 4, 6, 10, 11, 12, 13, 14, 15, 16, 18, 19

Dharmendra Patel:

Photos 1, 5, 7, 8, 17, 20

Dominik Erik Davies: Photo 9

Funders/Partners:

Staffordshire Libraries, Appetite, Arts Council England

